

Classification Keys

twinkl

Aim

- I can create a classification key.
- I can show the characteristics of living things in a table and a key.

Success Criteria

- I can identify the characteristics of living things.
- I can use the characteristics of living things to sort them using a classification key.
- I can show the characteristics of living things in a table.
- I can create a classification key.

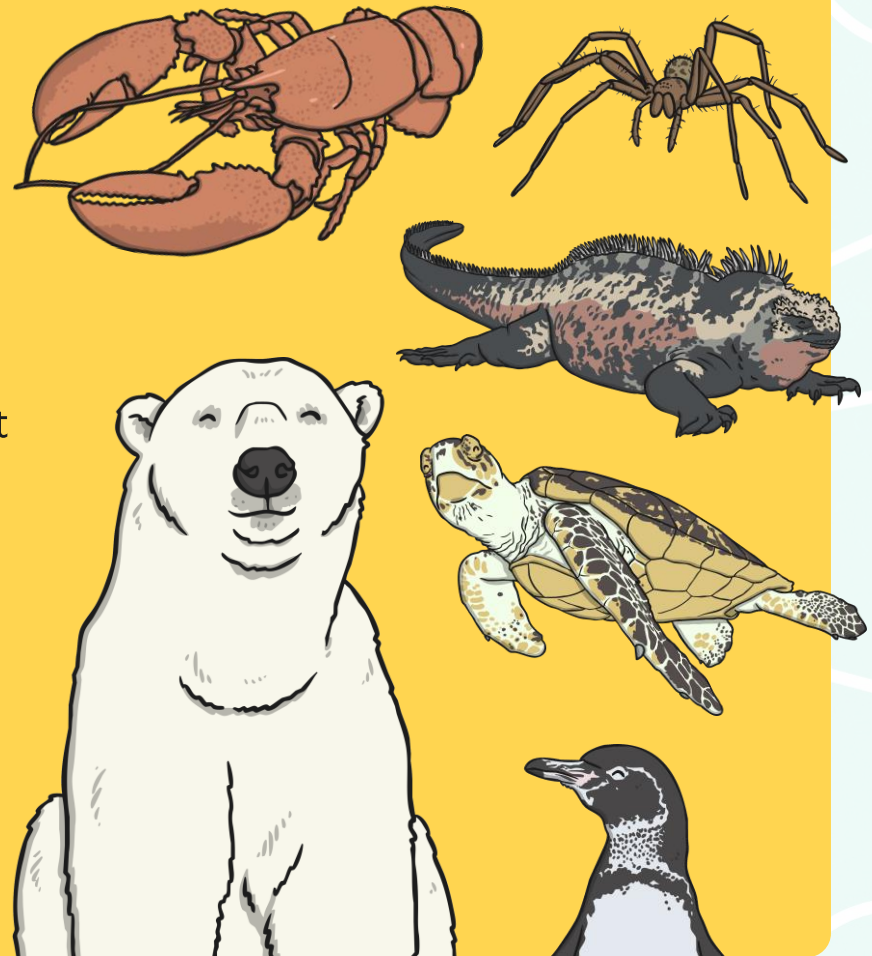
1. Characteristics

Today we are going to create our own branching keys to identify living things by looking at their characteristics.

The characteristics of a living thing are what make it similar or different to other living things.

All species of living thing have a unique set of characteristics.

Species with similar characteristics are put into groups. This is how we classify living things.



Which of these are specific characteristics of a domestic cat?



Is awake

Has fur

Is cute

Has four legs

Has a tail

Has whiskers

Is a carnivore

Is a baby

Likes milk

Plays with string

Which of these are specific characteristics of a domestic cat?



These are some of the characteristics of the domestic cat:

Has whiskers

Has four legs

Has fur

Is a carnivore

Has a tail



These are **not** characteristics of the species:

Is awake

Is cute

Likes milk

Is a baby

Plays with string

Why not?

Characteristics



What are the characteristics of this living thing?



Characteristics



What are the characteristics of this living thing?



Characteristics

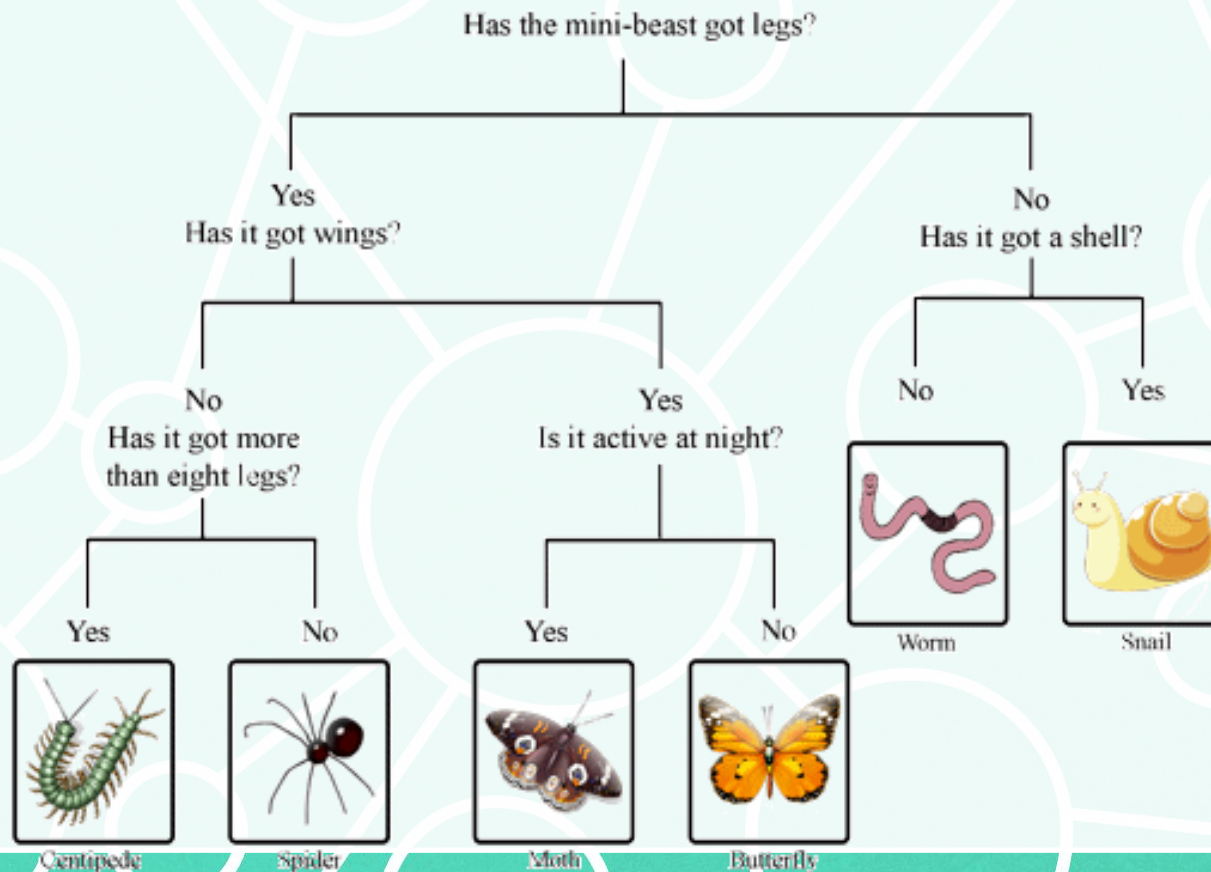


What are the characteristics of this living thing?



2. Classification Keys

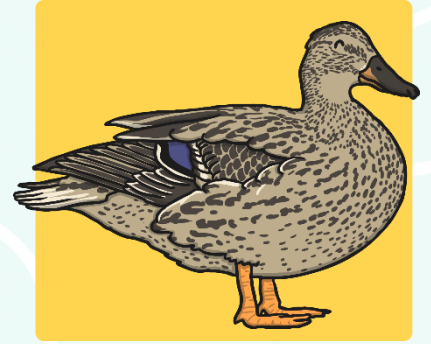
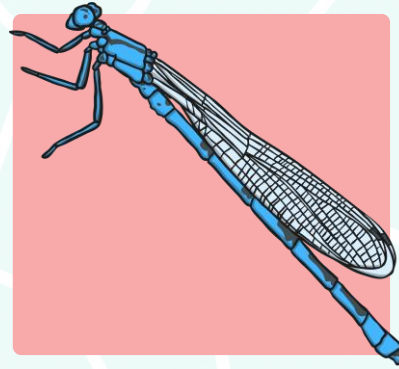
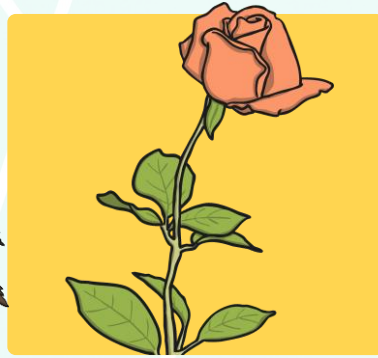
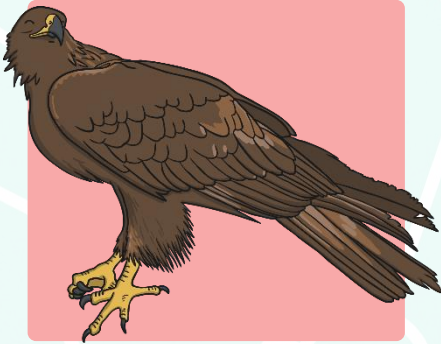
A **classification key** is a series of questions that determine an organism's physical characteristics. The answers to the questions will either lead to another question or to an organism. This is one way we can identify organisms.



Classification Keys

You are going to create a classification key to sort living things.

Look carefully at these living things. What question could you ask to split them into two groups?



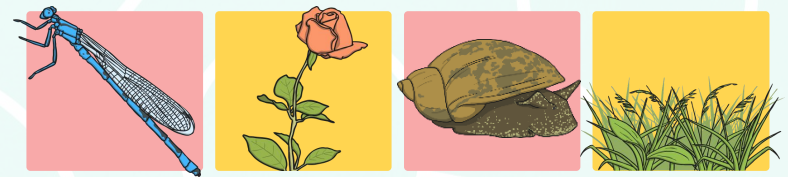
Classification Keys

You could ask...

Is it a vertebrate?

yes

no



Let's now take the group of vertebrates. Think about what is the same and different about them?

What question could you ask to split these living things into two groups?

Classification Keys

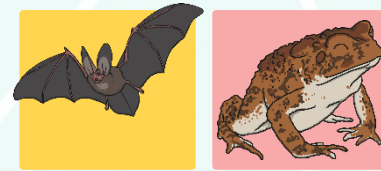
You could ask...

Does it have feathers?

yes

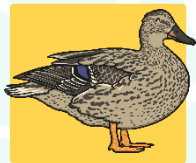


no



Does it have webbed feet?

yes



no



When you reach the end of the key, move on to the next group of living things. Choose a question that lets you sort them into two sets as before.

Classification Keys

Does it have feathers?

yes

no



Does it have webbed feet?

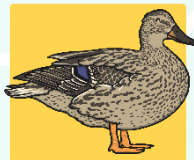
Does it lay eggs?

yes

no

yes

no



Classification Keys



Look at the worksheets provided, we are going to practice using classification keys and asking appropriate questions.





Well Done!
Next week, we
will look at
classification keys
again.

